



TECHNICAL SPECIFICATIONS

UPDATED MAY 2023

THEATRE TECHNICIAN

Brian McCormack
09064 92129
085 816 7554
tech@deancrowetheatre.com

INTRODUCTION

We are pleased to offer a wide selection of technical information. If there is anything additional that you require or if you need more information, please do not hesitate to contact us directly.

A member of our technical staff can be on standby at all times and will help with Get-in and Get-out. Additional technical cover will be charged for. Please advise if you wish us to engage lighting riggers/operators, sound technicians or any stage crew on your behalf. In the event of any changes (e.g. your arrival time) please notify the Theatre Manager. On arrival at the Dean Crowe Theatre, please check in to the Theatre Manager's office.

LIGHTING

House Lighting

- Controlled independently from control room and stage manager's corner.

Stage Lighting

- Console – ETC Ion XE20
- Also available Strand Palette VL 500 Channels

Lighting Equipment

- 15 no. Cantata 1.2k Fresnels
- 16 no. Rama 1.2k Fresnels
- 16 no. S/L Profiles 600 Watt– 10 x 15/32, 8 x 23/50
- 20 no. Par Cans(Cp62) 1k
- 9 no. Coda Cyc 1k Floods
- 4 no. Chauvet Colorado 1 Quad Zoom Tour LED
- 4 no. generic LED Par Cans
- 2 no. Stairville Stagepar CX2 LED
- 2 no. Stairville Revue RGBA LED COB
- 2 no. Gobo Holders(size b)
- 1 no. Hazer Stairville AF-250
- 2 no. boom plates and boom bars
- Assorted cabling

4 no. 15amp Splitters

1 no. 16 amp to 13 amp cable

1 no. 15 amp to 16 amp cable

1 no. 16 amp to 15 amp cable

5 no. 20ft 15 amp cable

Dimmers

- 84 Dimmers – 72 no. Strand LD90, 12 no. Strand Act 6.

Circuits

- 84 Circuits patched to dimmers in total on pre-wired bars
- FOH Circuits 1-18
- FOH Booms 21-24(paired)
- LX1 Circuits 25-36
- LX2 Circuits 37-48
- LX3 Circuits 49-60
- LX4 Circuits 61-72
- Floor Circuits 73-84
- DMX Connections LX 1-4(3 pin XLR)

SOUND

Sound System

- Allen and Heath GL 2400
- DBX 1215 Graphic Equalizer
- FOH Amps:
 - 1 no. Behringer Europower EP2000
 - 2 no. Behringer Europower EP1500
- FOH Speaker:
 - 6 no. HK Audio Premium Pro
- Mutlicore 24/8 from stage left to control room
- Mutlicore 6/2 from Stage Right to Stage Left
- 8/4 multicore 20m

Stage Sound Equipment

- 2 no. W Audio 400 Watts active Speakers
- 2 no. EV ZLX 12P
- 3 no. Shure SM58S microphones
- 4 no. dynamic microphones
- 2 no. wireless handheld microphones
- 1 no. Sennheiser e609
- Leads:
 - 6 no. 10m XLR
 - 2 no. 6m XLR
 - 2 no. 15ft Jack-Jack Leads
 - 1 no. 6ft Jack-Mini Jack Leads
 - 2 no. 25ft Speak-on Leads

STAGE

Performance Area within Prosc. Arch

- Height: 3.66m (12ft)
- Stage Width: 9.14m (30ft)
- Stage Depth: 7.67m (25ft)
- Floor: Black painted marine ply.
- Cyclorama Wall: White plaster(hard cyc)

Drapes and Masking

- 1 set House Tabs – Maroon on traveller tracks
- 2 sets black tabs – mid stage and upstage – on traveller tracks
- 6 no. soft black legs
- 6 no. 13'x4' hard black masking flats
- 2 no. 13'x2' hard black masking flats
- Pipe and Drape (5 no. uprights, 5 no. baseplates, 5 no. spigots, 4 no. crossbars)

Weights and Braces

- 7 no. 12.5kg Stage Weights
- 7 no. Metal Braces
- 5 no. 25kg Stage Weights

Risers

- 8 no. 8'x4' risers (400mm high)
- 6 no 4'x2' steps (200mm high)

VIDEO

- 1 no. Epson Projector
- 1 no. Panasonic Blu-ray DVD player
- HDMI cable from FOH bar to Control Room and Stage Left

STAGE MANAGEMENT

Dressing Room 1

- 2 no. Dressing Areas with counters and mirrors
- 2 no. W/C
- 2 no. Wash-Hand Basins
- 1 no. Large Shower
- 1 no. Iron and Ironing board
- 1 no. TV Monitor with video feed from stage

Dressing Room 2

- 2 no. Dressing Areas with counters and mirrors
- 2 no. W/C
- 2 no. Wash-Hand Basins
- 1 no. Large Shower
- 1 no. Iron and Ironing board
- 1 no. TV Monitor with video feed from stage

Green Room

- 1 no. Fridge
- 1 no. Microwave
- 1 no. Kettle
- 1 no. Toaster
- 1 no. TV Monitor with video feed from stage

TV Monitors with video feed from stage

- Stage Left
- Stage Right
- Dressing Rooms
- Green Room
- Control Room
- Bar
- Office

Get-In/Get-Out Access

- Loading Bay/Scene Dock
- 33ft x 12ft with Direct access to stage through 7ft x 6ft Door

Talkback and Communications

- Canford Tecpro Communication System
- 3 no. Beltpacks & Headphones
- Audio show relay system to dressing rooms and green room controlled from stage manager's corner.
- Audio talkback to dressing rooms and green room – mic at stage manager's corner.

ADDITIONAL INFORMATION

Seating Capacity

- The proscenium arch auditorium of the Dean Crowe Theatre has a maximum capacity of 442:
314 Stalls including Wheelchair Spaces
128 Balcony

Stage Rules

- No fixing / screwing to the stage floor or walls under any circumstances. Some weights and braces are available. If this is of concern please contact the theatre.
- Cast, Crew and Theatre Staff only allowed backstage.
- Operation of Motorised and Manual bars to be performed by Theatre staff only.
- Theatre ladders only to be used upon inspection by theatre staff.
- Food and Drink are prohibited from Auditorium, Control Box, Stage and Backstage Light refreshments are of course allowed in dressing rooms. No alcohol allowed in any of these areas.
- Maximum of 4 people allowed in the control room.
- We prefer no painting or construction work to be undertaken in the theatre. Some alterations/running repairs will of course be allowed.
- Any electrical equipment provided by your company/group must conform to all current safety standards and regulations.
- Any Stage Lights provided by your company/group must be fitted with a safety bond.
- Food and Drinks as part of a performance are at the Theatre's discretion.
- The Theatre reserves the right to refuse the use of any equipment, including scenery, deemed to be unsafe.
- Companies are required by contract to provide the Theatre Management with full details of the production to include full details of scenery, lighting, sound and all technical requirements relating to the production as well as a written risk assessment not later than three weeks prior to the fit-up date.
- The Theatre reserves the right to prohibit any actions or activity in the theatre, including parts of the performance, deemed to put either theatre staff, performer or the public at risk. In particular, the use of naked flames, water, sand, gravel, earth, cigarettes, strobe lighting or loud pops or bangs should be discussed in advance with the theatre management.
- The Theatre Manager's decision in all the above matters is final.

Health & Safety

- First Aid Kits are located in the foyer, bar, tech control room and green room.
- Burns kits are located in the bar and green room.
- A defibrillator is located in the foyer.

The Dean Crowe Theatre Trust CLG has completed a Safety Statement in compliance with Section 20 of the Safety, Health and Welfare at Work Act, 2005. The Safety Statement is updated regularly and is available from the Theatre Manager upon request.

10
11
12

LX 4 72 71 70 69 68 67 66 65 64 63 62 61

1
2
3

LX 3 60 59 58 57 56 55 54 53 52 51 50 49

7
8
9

LX 2 48 47 46 45 44 43 42 41 40 39 38 37

4
5
6

LX 1 21 36 35 34 33 32 31 30 29 28 27 26 25
22
23
24 BOOM STAGE RIGHT BOOM STAGE LEFT

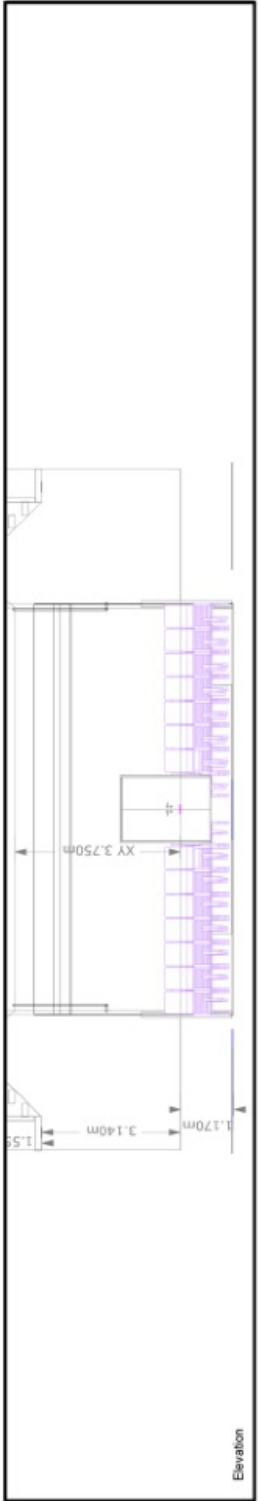
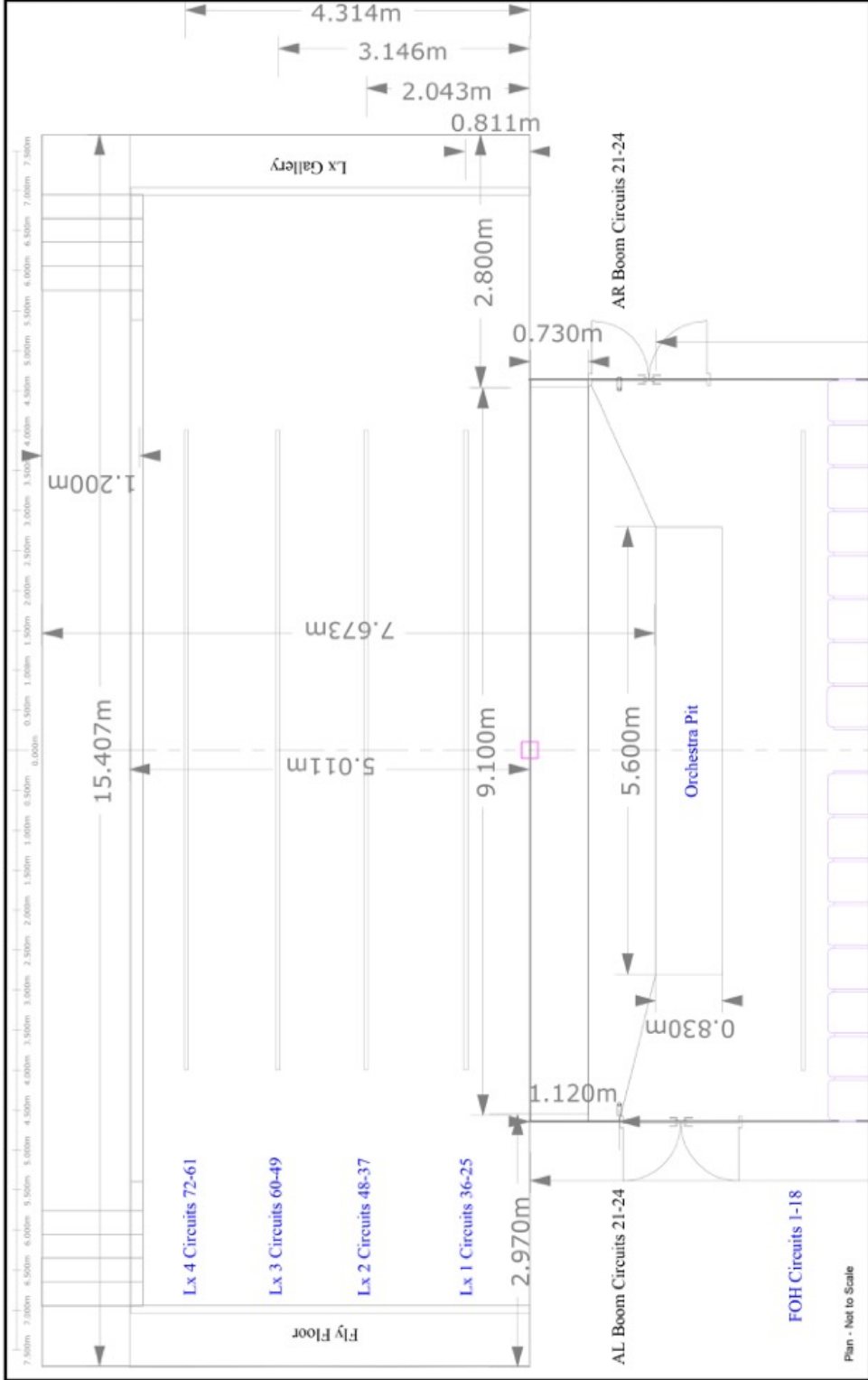
FOH 1 2 3 4 5 6 7 8 9 10 11 12 13 14 15 16 17 18



Lighting Design:	Assistant:
Director:	
Script Design:	
Venue:	
Zero Date:	Apr/18/23
Printed By:	Isaac Prensberg
File:	Dean Crowe Theatre v0.wg

Lamp Legend		
Symbol	Name	Count Mode

Color Count	
Color	Count



- NOTES**
- Atmosphere machines USR
 - All fixtures to have safety chains
 - Opto splitters to be supplied where necessary
 - termination on all DMX
 - rigging safety gear to be supplied by house

Elevation